

Gearing Up For Tomorrow

KAS

Knowing No Limits
Around the Clock
State of the Art

CONTENTS

Gearing Up For Tomorrow, KAS 02

Vision · Service Network 04

President Message 05

Ground Handling Services 06

→ Ramp Handling 08

✈ Cargo Handling 12

⛽ Refueling 14

🔧 Maintenance 16

Other Services 18

🏠 Jeju Folk Village 20

💧 Mineral Water 22

🐄 Livestock Farming 23

🧺 Laundry 24

🚚 Total Care of Logistics 25

Equipment Rental

Sharing and Caring 26

Social Contributions 28





대한항공



DOUGLAS

KAS-3-416



KAS has grown in harmony with the development of Korean economy and aviation industry.

Although KAS is the leading ground handling company in Korea, we will not be satisfied with where we stand now.

KAS will continue to meet our customers' expectations with the customer first spirit and to be a company responsible for the society and community in which we operate.



Vision · Service Network



President Message



K

Knowing No Limits

KAS focuses on not only aircraft ground handling services but also sustainable growth for tomorrow.



Vision · Service Network

Aiming for the world's best service, KAS knows no limits to its service excellence.

The management and employees of KAS are working together as one to deliver the best services in the ground handling industry and to ensure that people around the world can count on us as a reliable service provider.

- International & Domestic airports
- Domestic airports
- Locations of other services





President Message

**KAS will be reborn as
a well trusted and
recognized company
by the people around the world.**

Value up, KAS

Since its foundation in 1968, KAS has grown with the development of the nation's economy and aviation industry.

Based on experiences and expertise accumulated by overcoming demanding challenges, KAS has grown as the best ground handling company in Korea, serving more than 70 customer airlines across the nation's major airports.

Besides, KAS has been carrying out other businesses including the aircraft / GSE maintenance, logistics equipment / LFP battery rental, laundry service for blanket and linen, top quality mineral water, livestock Farming and Jeju Folk Village leading the development of the local community and the preservation of traditional folk culture of Jeju Island.

Back to the Basics, establishing self directed safety system

Safety at the workplace is the basic principle for protecting customer's property and determining the service quality. We will always keep in mind that basics are the primary values, and will build self directed safety system together with all employees.

Responsibility and service, creating the value of co-prosperity

With the motto of "Pursuing the public interest and serving the society" KAS shall fulfill its responsibility as a member of the social community through various social contribution programs and continuous sharing management.

Ethical management, observing principles in creativity

As a global company, KAS will pursue ethical management by observing principles in creativity to be trusted and respected.

Quality Value up, fulfilling customer Satisfaction

By performing continuous quality improvement activities and observing customer-centered management principles, KAS promises you that we will do our best to live up to our customers' expectations and support.

Thank you.



Korea Airport Service Co., Lt
President & CEO **Soo-Keun Lee**

Ground Handling Services

KAS delivers its top notch ground handling services across the nation's major airports. Its specialized and seamless services, ranging from passenger, cargo to maintenance are the driving force to move the nation forward.



Ramp Handling



Cargo Handling



Refueling



Maintenance

A large white airplane is the central focus, with a yellow ground support vehicle (GSV) in the foreground on the left. A ground crew member in a blue uniform and cap stands near the aircraft's landing gear. The aircraft has "CA 100" and "100" visible on its side. The background shows a clear sky and a runway.

A

Around the Clock

Our dedicated personnel are on the move around the clock to deliver the best services in the industry.



Ramp Handling

KAS provides the customer with the best ground handling service quality through the world-class total solutions in order to meet the customer needs.

As an internationally certified aircraft ground handling company, KAS has been providing the world-class services for the operation of aircrafts across the nation's major airports including but not limited to Incheon International Airport.

- * Selected as the best Asia-Pacific ground handling company by Ground Handling International magazine
- * Accredited ISAGO (IATA Safety Audit for Ground Operations) by IATA





As the total solution ground handling company, KAS has been continuously upgrading the service quality and doing its best for the customer satisfaction to provide its customers with the best ground handling services.

- Loading / unloading of cargo and baggage
- Baggage handling
- Aircraft push back and towing
- Catering ramp handling and storage of cabin material
- Aircraft interior and exterior cleaning
- De-icing / anti-icing and snow / ice removal
- Marshalling and ramp to flight deck communication service
- Passenger stairs and passenger / crew transport
- Potable water and Lavatory services
- Wheel Chair Car and Ambulance Lift Car
- GPU, ASU, ACU
- Passenger and flight operation service
- Private and business jet handling service





| Service Quality Management |

To secure higher service productivity, KAS performs a variety of safety management activities and conducts the training programs as follows.

■ Safety Management Activities

- Dedicated safety managers
- 24-Hour safety patrol
- Habituation of pointing and Calling campaign
- Presentation and exhibitions on near miss safety accident cases
- Zero Defect Campaign
- Internal suggestions system for preventing safety accident (Ground Safety Report)

■ Training Programs

- Job training
- Preventive programs against safety accident
- Special courses for training safety control specialists
- Dangerous goods handling training courses

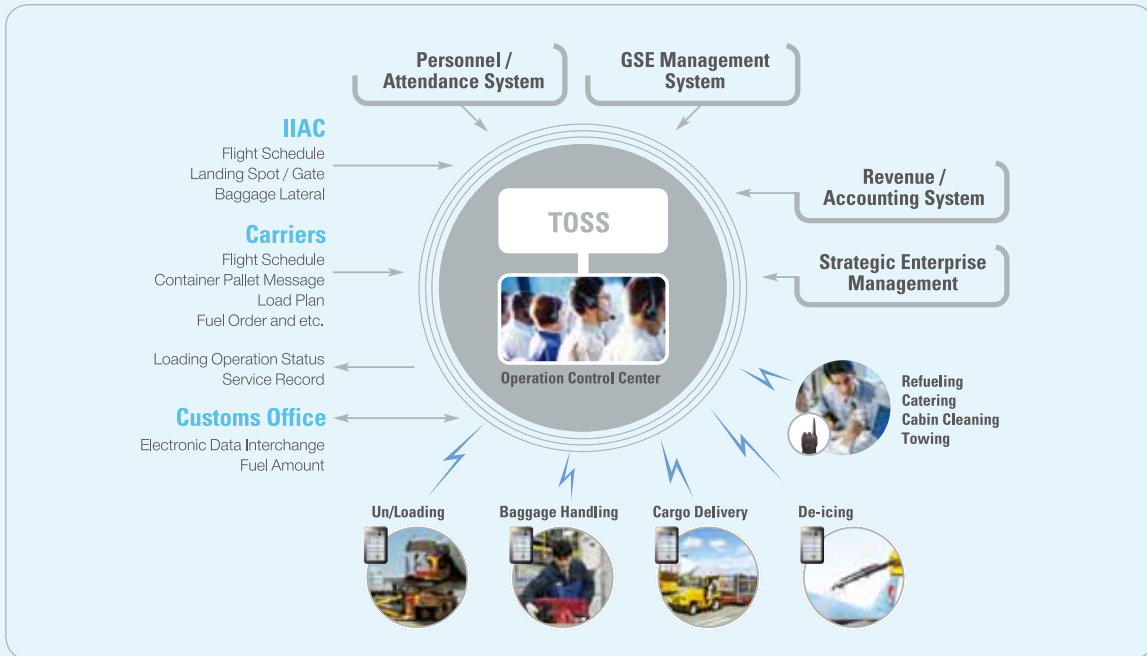




| Ramp Operation System |

Our proprietary TOSS (Total Operation Support System) and its sub system, Mobile TOSS, feature and analyze the important ground handling information.

Thanks to TOSS and Mobile TOSS, KAS can monitor and control all the ground handling processes in real-time bases.



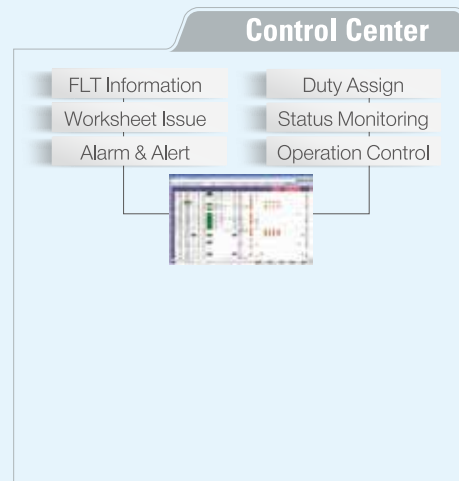
Through the support of planning and assigning functions of TOSS, KAS has improved the efficiency of manpower and GSE operation. The monitoring and operation control functions also contributed to the on time operation of aircrafts.



- FLT Info
- Handling FLT
- Work Order
- OSI



- Handling Status
- Service Record





Cargo Handling

The combination of the state-of-the-art cargo terminal facilities and cargo management system of COSS (Cargo Operation Support System) ensures the prompt and safe handling of the customers' cargo.

With the accumulated cargo handling experiences and expertise over 50 years, KAS has been providing the best handling services ranging from cargo loading/unloading, export/import and transit cargo, cargo security check, load control, document handling and storing services for the special cargos including insulated, cold, frozen and valuables at Incheon International Airport.

- Acquired AEO (Authorized Economic Operator) certification
- Awarded Korea Logistics Award (Ministry of Land, Infrastructure and Transportation)





Services we provide

| Air Cargo Handling Services |

Based on the advanced mobile ground handling system, KAS has established a fast and accurate ground handling environment to secure the service quality improvement and the optimized logistics flow for the customer satisfaction.

- KAS provides cargo build-up, break down, load control, document handling, mail, dangerous goods and special cargo handling services for export, import and transit cargo.
- KAS operates special warehouse facilities including refrigerating, freezing and valuables safe.



| Freighter Handling Services |

Standing on extensive service experiences and expertise, KAS provides world-class freighter handling services for the ultimate customer satisfaction.

- KAS delivers export cargo to the respective flights and loading on aircrafts.
- KAS performs unloading import cargo from flights upon arrival and transporting to terminals for trucking service.



Refueling

As the first company to initiate the aircraft refueling service in Korea, KAS currently provides over 50 customer carriers including Korean Air with the high quality refueling services.

KAS has provided refueling service by making use of the automatic hydrant fuel supply system and diverse fueling equipment (Dispenser, Fueler) at the airports, undertaking standardized handling services in full compliance with the Guidelines for Aviation Fuel Quality Control and Operating Procedures established by JIG (Joint Inspection Group) and certified by IATA.





Service Efficiency

■ Aircraft refueling service

Providing the IATA-certified standardized services with the support of the hydrant fuel supply system and other fueling equipment (Dispenser, Fueler)

■ Transport & sales of aircraft fuel

Transporting or supplying aircraft fuel with using the refueling equipment

■ Aircraft fuel quality management

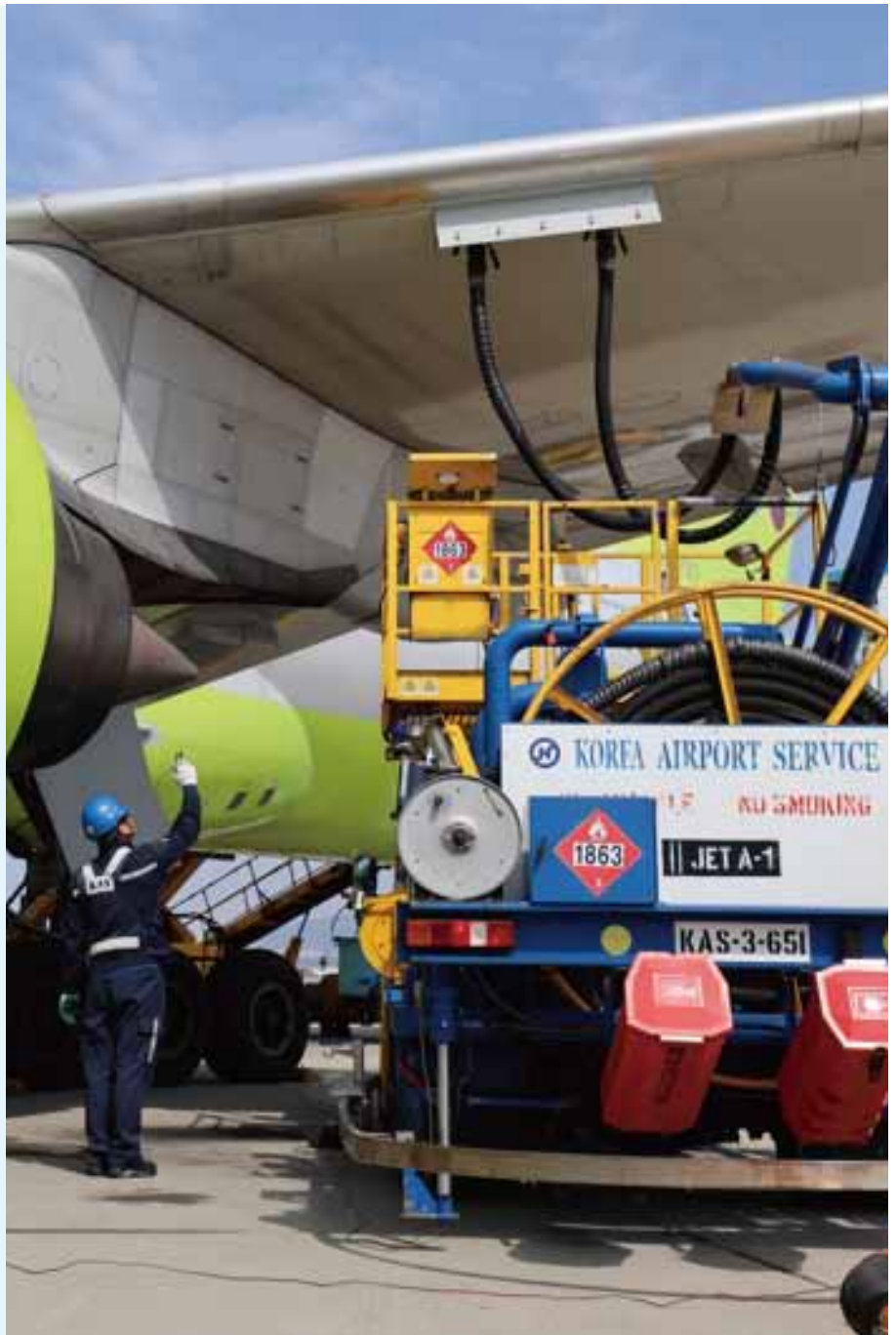
Undertaking and managing experiments at the nation's four major airports (Incheon, Gimpo, Busan and Jeju) to check and manage the contamination status of aircraft fuel

■ Sales of filters and other business

Supplying and managing the quality control of the aviation filter that strains off impurities from jet fuels and the water detector that determines the presence of water in jet fuels to the public institutes

■ Private Jet refueling service

Providing refueling service to domestic along with world private jets





Maintenance_ Aircraft Maintenance

KAS provides the line maintenance services for the passenger and cargo aircraft of the customer airlines operating at Incheon and Gimpo International airports.

By improving the maintenance capabilities step by step, KAS has been endeavoring to establish the advanced aircraft MRO (Maintenance, Repair and Overhaul) system to provide the safest and most competitive services.



■ Available Aircraft types for maintenance

- B737-700/800/900
- B737-8
- B747-400/-8i
- B767, 777 Series
- B787-9
- A330 Series
- A319/320/321 Series
- A380 (Cabin)
- A220-300

■ Maintenance certificates

- Registered for aircraft maintenance, 2004
- Acquired AMO (Approved Maintenance Organization), 2007
- CAAP (Philippines), 2024

■ Available Maintenance service scopes

- Routine Service
- Non-routine Service
 - Pre-flight Check, Post-flight Check
 - Routine Check
 - Non-routine Services (Corrective Action with troubleshooting for defects)
 - Cabin Maintenance
 - A/C Towing Cockpit Brake Operation
 - A/C Wheel, Tire & Brake Change
 - A Check



Maintenance_ GSE Maintenance

Equipped with the nation's largest GSE (Ground Support Equipment) maintenance facilities, KAS provides the most efficient and high quality maintenance services.

Through TEMS (Total Equipment Management System), KAS systematically maintains the maintenance records and manages maintenance services on a real-time basis, and also has in-house maintenance facilities where committed safety checks are performed for diverse equipment and vehicles.



Other Services

Since its foundation, KAS has made every effort to create a better and happier society for us where we live. Separately from a variety of the airport ground handling services, we have sought to contribute to the development of the nation's economy and culture by engaging in other businesses including the aircraft / GSE maintenance, top quality mineral water, livestock Farming and Jeju Folk Village.

Besides, KAS makes efforts to excavate other businesses such as logistics equipment / LFP battery rental and laundry service for sustainable growth.



Jeju Folk Village



Mineral Water



Livestock Farming



Laundry



Total Care of Logistics Equipment Rental



S;

State of the Art

KAS provides state-of-the-art services that are tailored to meet customers' needs.



Jeju Folk Village

Jeju folk village is a place where visitors can vividly witness the diverse scenes of the island from more than a century ago

Jeju Folk Village exhibits a comprehensive collection of traditional folk articles of Jeju island, which were mostly prevalent. Additionally, the folk village has a beautiful garden where wild flowers and local native trees of the island bloom and grow.

■ Mountain village

Located at a plain field at an altitude of 300 meters above sea level, the mountain villages enable the residents to engage in both agriculture and ranching.

■ Hill-country village

Located between the altitudes of 100 meters and 300 meters above sea level, the residents of the hill-country villages mostly relied on agriculture for their living.

■ Fishing village

Fishing villages in Jeju are naturally formed at a lower altitude (100 meters above sea level) where spring water is easy to obtain.

■ Shamanism village

This is where visitors can see the race of traditional folk religions. There are a variety of indigenous small shrines dedicated to village deities.

■ Old Jeju Administration Office

This is the local government office where the Jeju governor served.

※ Website : www.jejufolk.com





The logo of Jeju Folk Village symbolizes Jeju's traditional thatched house, Jung-Nang & Jungjuseok, containing the meaning of welcoming the visitors to Jeju Folk Village.

The colors of yellow, which symbolizes canola flower, the colors of orange, which symbolizes Jeju's tangerine, the colors of reddish brown, which symbolizes 'Gal-Ot(Jeju's Folk Costume)', the colors of brown, which symbolizes Jeju horses, and the colors of basalt are harmoniously expressed in Jeju Folk Village's logo.



Jeju Folk Village is famous for filming movies and dramas such as "Daejanggeum" and "Chuno," has once again become a famous filming spot with the completion of the opening set of "Geo Sang Kim Mandeok" in 2010.



Mineral Water

HANJIN Jeju Pure Water

- Water created by the nature of Jeju and chosen by the Sky

HANJIN Jeju Pure Water comes from natural volcanic bedrock water pumped up from a depth of 1,070ft (325m) below Mt. Halla of Jeju Island. It delivers the taste of nature.

Since 1984, KAS obtained Jeju Island's first mineral water development and sales license.

The product has been supplied as potable water to 10 airlines including Korean Air, Grand Hyatt Incheon and KAL Hotel.

In addition, it is introduced as a premium mineral water brand in public through online and telesales.

- Official mineral water for the 1986 Asian Games and 1988 Olympic Games

- Composition (mg/L)

- Calcium 4.2~8.5 / Magnesium 5.8~8.5 / Sodium 5.3~9.4 / Potassium 1.9~3.3 etc.

- Acquisition of International Quality Certification

- Successfully passed the water quality tests by the FDA, IBWA

※ Website : www.jeuwater.com





Livestock Farming

Jedong Ranch, where high quality livestock products of clean Jeju Island are produced.

Located 400m above sea level, in Jedong Ranch, KAS produces the best eco-friendly and healthy livestock products by feeding Korean beef cows with our own produced non-antibiotic feeds.



■ Jedong Korean Beef



The cows feed on haystack grown on the stock farm in Jedong Ranch and non-antibiotic feed. The beef products are produced with scientific breeding techniques under strict quality control and hygiene management.

※ Website : www.e-skyshop.com





Laundry

Based on over 50 years of experience in the industry, KAS provides laundry services to the world's top class airlines and deluxe hotels.

To provide our customers with better service, KAS has made continued investments in the facilities and equipment. In 2007, we established the new laundry facilities as large as 4,177m² with four stories above ground and one underground level, which are equipped with automated laundry handling system (overhead rail system, tunnel washer and etc.), enabling us to provide more hygienic and advanced laundry services. KAS also focuses on using eco-friendly detergents in an effort to improve service quality and protect the environment.

※ Obtain "Green Rating" for laundry industry sanitation service level by Korean government



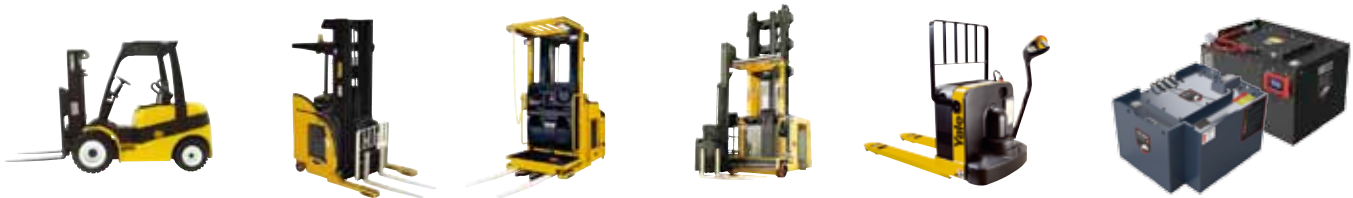


Total Care of Logistics Equipment Rental

With the accumulated experience and maintenance knowhow, KAS provides the optimum rental services to the customers.

KAS has engaged in the special logistics equipment rental business including forklift and LFP battery under the brand of 'KAS Rental'.

Having the nation's largest maintenance facilities at Incheon airport and specialized maintenance manpower at the major airports in Korea, KAS offers the nation-wide services that satisfy the customer's logistics needs.



■ Maintenance service

- High-quality maintenance services based on over 50 years of experience
- Preventive maintenance and emergency services
- Efficient equipment management
- Training programs for the forklift operators
- Repair service to keep rental equipment in optimum conditions
- Advanced equipment tracking system

■ Provision of safety/control solution

- Various kinds of safety solution service suitable for the environment of industry
- Multiple safety equipment including AI camera, interlock safety belt system, fingerprint recognition control, wearable safety system, etc.

■ GSE Equipment rental

- Provision of rental services of ground service equipment including Ramp Tractor, GPU, Lift, etc
- Provision of the total repair service

■ LFP Battery Rental

- Provision of good quality of LFP battery rental service with the reasonable price
- Provision of a variety of vehicles including forklift, other logistic vehicles, GSE equipment, Bus, etc.
- ESG implementation through electrification of diesel based vehicles
- Cost saving and reasonable operation through fuel cost reduction

Sharing and Caring

KAS will never hesitate to continue playing the role of corporate citizen in our society by various social contribution programs in connection with local societies and “Sharing and Caring” management for the sake of a happier Korea.



Social Contributions



KAS ;

Social Contributions

As a socially responsible company with a green vision, KAS continues to fulfill its well-defined activities by not only supporting local communities but also striving to protect the environments.



Social Contributions

The more we share, the happier we will be.

It is our main duty to realize the genuine value of our existence, to make society heartwarming by “Sharing and Caring” management.

A coexistence and sharing, active corporate social responsibility and volunteering!

Having putting lots of efforts to raise the sense of well-being of the entire society in the country, KAS has been implementing social responsibility and volunteering as a member of the society with the motto of a ‘Socially Responsible Company Serving Common Good’.





■ **In-house volunteer club ‘HamSaSe’**
 (‘The society in which we live together’)

KAS has been giving love and sharing happiness by engaging in volunteer activities for underprivileged and needy neighbors through the joint activities with the local volunteer centers and public organizations.

■ **“Small change” donation**

KAS has voluntarily collected small change from monthly salary and donated it for needy neighbors.

■ **Environmental campaign**

Since 1996, KAS has been participating in ‘1 Company & 1 River Patronage campaign’ and has been proactively implementing activities to preserve the diversity of biology and improve the sea water quality jointly with the public institutions in Gyeonggi-do, Incheon and Jeju.

*In addition, KAS has raised funds or made donations in support of natural disaster victims to share their hardships.

■ **Invitation event for local students**

KAS invites students from Jeju Island to provide opportunities for field trips and experiences of our workplace to help them grow up as sound members of our society.

■ **The recruitment of disabled athletes**

We actively support the creation of job opportunities for disabled athletes.

KAS
KOREA AIRPORT SERVICE CO.,LTD.

